

[View this email in your browser](#)

Spring 2022



## Regional Educational Laboratory Northeast & Islands **NEWS**

Serving Connecticut, Maine, Massachusetts, New Hampshire, New York, Puerto Rico, Rhode Island, Vermont, & the U.S. Virgin Islands

### Director's Blog



#### What's New at REL Northeast & Islands?

Our team at REL Northeast & Islands is thrilled to announce we will continue working with states and territories across our region for another five years. In this blog we discuss helpful resources and future research projects for state partnerships in our region.

[Learn More](#)

### New Resource



#### Evaluating Professional Learning: Workshop Materials

As an accompaniment to [\*Evaluating Professional Learning: A Tool for Schools and Districts\*](#), educators can use these workshop slides and facilitator agendas to guide their teams through the development of a plan to evaluate their professional learning initiative.

[Learn More](#)

# Latest Report

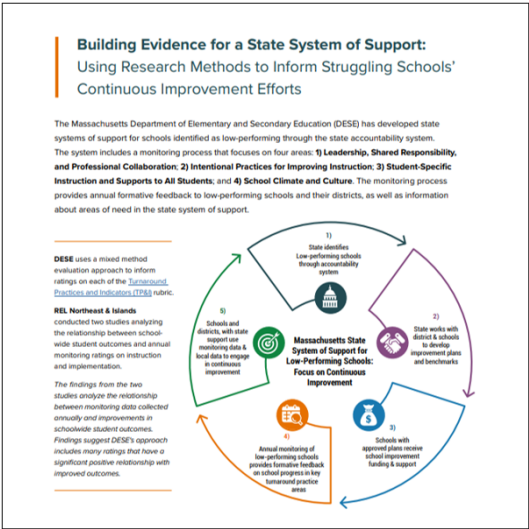


## Teacher Shortages in New York State

This study explored the pathways through which new teachers earned certificates, their certification areas, and their subsequent placement and retention in districts across the state, particularly high-need districts.

[Learn More](#)

# New Infographic



## Building Evidence for a State System of Support

This infographic shares findings from two studies that analyze the relationship between schoolwide student outcomes and annual monitoring ratings on instruction and implementation in Massachusetts.

[Learn More](#)

---

## Blog Post



### REL Resources for Educators of English Learner Students

This blog explores the work of the Cross-REL English Learner Working Group over the past eight years, which has served to advance the work of identifying and addressing the needs and priorities of EL students. The blog includes a comprehensive list of EL resources across the REL Program.

[Learn More](#)

---

## New from the Regional Educational Laboratories



### Lessons from the COVID-19 Pandemic: Evidence-based Resources for Facilitators on Remote Learning & Social and Emotional Learning

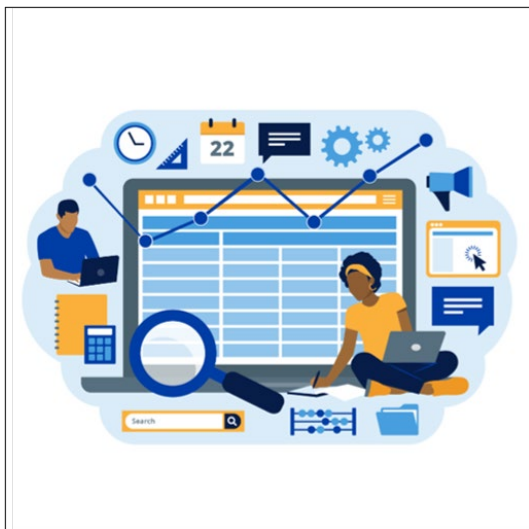
REL Northwest has created customizable professional development modules that draw on evidence-based resources about teaching and learning in a remote environment that were produced by researchers from the 10 RELs.

[Learn More](#)

#### Additional REL Resources:

- REL Appalachia Tool: [Branching Out: Using Decision Trees to Inform Education Decisions](#)
  - REL Central Video Series: [Teaching Math to Young Children](#)
  - REL Northwest Report: [Examining the Implementation and Impact of Full-day Kindergarten in Oregon](#)
-

## New from the Institute of Education Sciences



### Digest of Education Statistics, 2020

The Digest contains data on a variety of topics, including the number of schools and colleges, teachers, enrollments, and graduates, in addition to educational attainment, finances, and federal funds for education, libraries, and international comparisons.

[Learn More](#)

The REL Northeast & Islands newsletter features new resources designed to help educators and policymakers use data and research to improve student outcomes.



[Stay Connected](#)



[Visit Our Website](#)

*Copyright © 2022 REL Northeast & Islands, All rights reserved.*

Want to change how you receive these emails?  
You can [update your preferences](#) or [unsubscribe from this list](#).

This email was prepared under Contract 91990022C0013 by Regional Educational Laboratory Northeast & Islands, administered by Education Development Center. The content does not necessarily reflect the views or policies of IES or the U.S. Department of Education, nor does mention of trade names, commercial products, or organizations imply endorsement by the U.S. Government.