

What's New at REL Pacific?

REL Pacific Newsletter, March 2022, vol. 1



Letter From the Director

Dear Colleagues,

Welcome to the new REL Pacific contract cycle (2022–2027)! We are honored and thrilled to continue—and in some cases, refocus—working in partnership with you to achieve long-term outcomes focused on organizational effectiveness, educator practice, and student success.

As we kickstart this new cycle, we want to give you a snapshot of the opportunities and work to come. REL Pacific has work proposed with partnerships in two jurisdictions—Hawai'i and the Republic of Palau—to achieve large-scale, long-term outcomes through interrelated sets of applied research and training, coaching, and technical support projects with stakeholders. In addition to these partnerships, our team is currently refining partnership projects in collaboration with educators and key stakeholders in the Pacific Region's five remaining jurisdictions to achieve significant long-term outcomes. We hope you're as excited as we are for the next five years of growth and success!

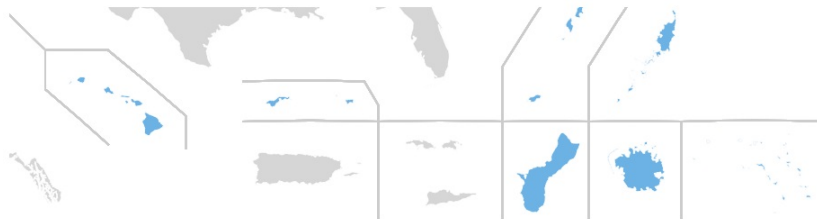
In this first newsletter issue of this contract cycle, we'd like to introduce you to REL Pacific leadership, including our task and partnership leads. If you've worked with REL Pacific in prior contracts, you'll see both familiar and new friends, all of whom stand ready to collaborate and partner with you to help you reach your goals.

As always, please don't hesitate to reach out with questions, concerns, or requests for assistance at relpacific@mcrel.org.

Best regards,

Christina Tydeman
REL Pacific Director

Check Out the New REL Website!



Regional Educational Laboratory Pacific

REL Pacific partners with educators and policymakers in American Samoa, Federated States Of Micronesia, Guam, Hawaii, Northern Marianas, Republic Of Palau, and Republic Of The Marshall Islands to improve learner outcomes. Learn more about REL Pacific.

About REL Pacific

Products

Events

To celebrate the new contract cycle (2022-2027), the Regional Educational Laboratory (REL) Program has revamped its website with a clean, fresh look! Learn about the REL program and find links to all 10 RELs—Appalachia, Central, Mid-Atlantic, Midwest, Northeast & Islands, Northwest, Pacific, Southeast, Southwest, and West. The site features a REL blog and new products, videos, and events from across the 10 RELs, which partner with educators and policymakers nationwide to improve student outcomes. You can find information on a range of education topics, from data collection, evidence-based practice, and social and emotional learning to online courses and teacher recruitment. The website also provides a full listing of more than 2,000 REL products.

[Check it out here!](#)

Meet Our Staff!

Each quarter, we'll introduce you to several REL Pacific staff members, all of whom are committed to supporting and serving you as tackle your problems of practice. Meet our applied research; partnership; dissemination; and training, coaching, and technical support leads below!

Dr. Sheila Arens is the lead for applied research and peer-reviewed research-based development projects. She has worked in partnership with Pacific Region stakeholders to conduct applied research and provide training, coaching, and technical support for more than six years and has served as a principal investigator on multiple studies aimed at understanding the predictors of college success and teacher outcomes in the REL Pacific region.



Dr. Katie Gao is REL Pacific's overall partnership lead. Since 2018, Dr. Gao has managed REL Pacific partnership communications and collaborative activities and has organized and facilitated meetings with key partners and system leaders, including the REL Pacific Governing Board and locally based consultants. She has also coordinated cross-REL activities and events on social and emotional learning.

Ms. Kirsten B. Miller has served as REL Pacific's dissemination lead since 2013, overseeing REL Pacific's website and social media accounts and the publication of print and digital research briefs, infographics, videos, newsletters, and brochures. Ms. Miller also plans presentations, webinars, and other events for national and international audiences.





Ms. Meagan W. Taylor is the lead for training, coaching, and technical support for evidence use. She has supported educator effectiveness and early learning for REL Pacific since 2019. Ms. Taylor most recently managed partnership communications and collaborative efforts with multiple research-practice partnerships across the Pacific region.

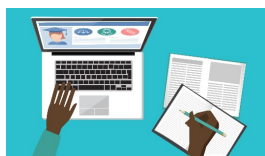
Keep an eye out for our next newsletter to meet more of our staff!

Get to Know REL Pacific!

REL Pacific is one of 10 Regional Educational Laboratories established and funded by the U.S. Department of Education's Institute of Education Sciences. The laboratories work with partnerships and alliances within their respective regions to develop research and provide training and coaching to support evidence-based education outcomes. The REL Pacific Region encompasses approximately 4.9 million square miles and serves 10 Pacific island entities. REL Pacific is housed at McREL International's Honolulu office.

[Learn More](#)

REL Pacific Resources



COVID Resources

Check out the RELs' COVID resource page for updated information and resources for educators and families.

[See More](#)



Products

Check out REL Pacific's products page on the new IES website! Click to see our research studies, blogs, and infographics!

[Read More](#)



Research Tools

Looking for relevant, actionable research tools? Click the link below for a variety of resources across 24 topic areas!

[Explore More](#)

We're on Twitter!

Follow @RELPacific on Twitter to stay up to date on our current work and exciting events!

[Follow Us](#)



REL Pacific
@RELPacific



REL Pacific | 1003 Bishop St, Ste
2200 Honolulu, Hawaii | 96813
relpacific@mcrel.org



This email was prepared under contract number 91990022C0010 by Regional Educational Laboratory Pacific, administered by McREL International. The content does not necessarily reflect the views or policies of IES or the U.S. Department of Education, nor does mention of trade names, commercial products, or organizations imply endorsement by the U.S. Government.